

CHIPPING HAMMERS

TOOL MAINTENANCE & REPAIR INFORMATION

Always use Chipping Hammers with in-line oilers.

FIELD OPERATION

Before:

1. For 650 Series, tighten handle to 200 ft. lbs.
2. For 450 Series, ensure all nuts and bolts on handle are tight.
3. Flush Air Tool oil or 10W grade equivalent into air inlet before connecting air hose. Install in-line oiler.
4. Check retainer and spring for wear or cracks. Replace retainer if worn.
5. Clean any water and/or dirt from air hose before connecting it to the tool.

During:

1. For your safety and that of others, keep tool against work at all times!
2. When moving from one work area to another, shut off tool.
3. Never run the tool without a steel bit or chisel in it.
4. Do not use tool as a wedge or prying instrument
5. When changing tool bit always shut air supply off and disconnect hose.
6. Always use an in-line oiler when operating tool.

After:

1. Flush tool with cleaning solvent, then refill with Air Tool oil or 10W grade equivalent.
2. Do not leave tool in water or in dirt.
3. For 650 Series, tighten handle to 200 ft. lbs.
4. For 450 Series, ensure all nuts and bolts on handle are tight.
5. Store the tool well oiled.

REMEMBER: PREVENTIVE MAINTENANCE WILL ASSURE MAXIMUM PERFORMANCE FROM ALL OF YOUR APT TOOLS.

TROUBLE SHOOTING GUIDE

If tool runs erratically:

1. Insure handle is on tight. Retighten to 200 ft. lbs. torque (650 Series Chipping Hammers).
2. Check all nuts and bolts to ensure they are tight (450 Series Chipping Hammers).
3. Flush cleaning solvent through the tool and flush Air Tool oil or 10W grade equivalent into air inlet.
4. Check for wear in front bushing (nozzle). Check for wear in the shank of the steel chisel. A worn steel shank or a worn front bushing means loss of air seal and less than optimum tool performance.

If tool has a throttle valve air leak: Remove plug and inspect "o" rings or sealing surfaces for damage.

If tool is not hitting hard enough:

- 1 Check for wear in front bushing (nozzle).
- 2 Insure handle is on tight. Retighten to 200 ft. lbs. torque.
- 3 Check all nuts and bolts to ensure that they are tight (450 Series Chipping Hammers).
- 4 If front bushing is not worn and handle is on tight, then check for wear on internal parts, if worn, they should be replaced. Check clearances between piston and cylinder very carefully.
- 5 Check tool internally for rust and/or dirt.

If you cannot shut the tool off:

- 1 Immediately turn off air source, then disconnect air supply.
- 2 Check the throttle valve for damaged or missing o'rings.

APT

**CHIPPING
HAMMERS
450/470 SERIES**



APT Chipping Hammers are used for scaling, chiseling, removing concrete build-up from the inside of cement mixers, light concrete demolition and cement finishing, form stripping, etc.

FEATURES

- Flapper valve design allows dirt to pass without stopping the tool
- Deep case-hardened alloy steel cylinders
- Drop-forged handles
- Replaceable bushing
- Adjustable exhaust deflector
- Choice of optional retainers including the APT latch-type
- Price includes oval retainer and locking spring

MODEL 450 SERIES FEATURES:

- 4-bolt style handle for ease of maintenance
- Available in 2", 3", and 4" strokes
- Handle design has a vibration dampening feature

MODEL 470 SERIES FEATURES:

- Same features as 450 Series; with tapered nose

ORDERING INFORMATION:

Standard Accessories:

- 7022 oval collar retainer
- 1941 retainer spring
- 759 reducing bushing 7/8"-24 to 3/8" NPT female
- 18210 oval collar, tapered

Optional accessories at extra charge:

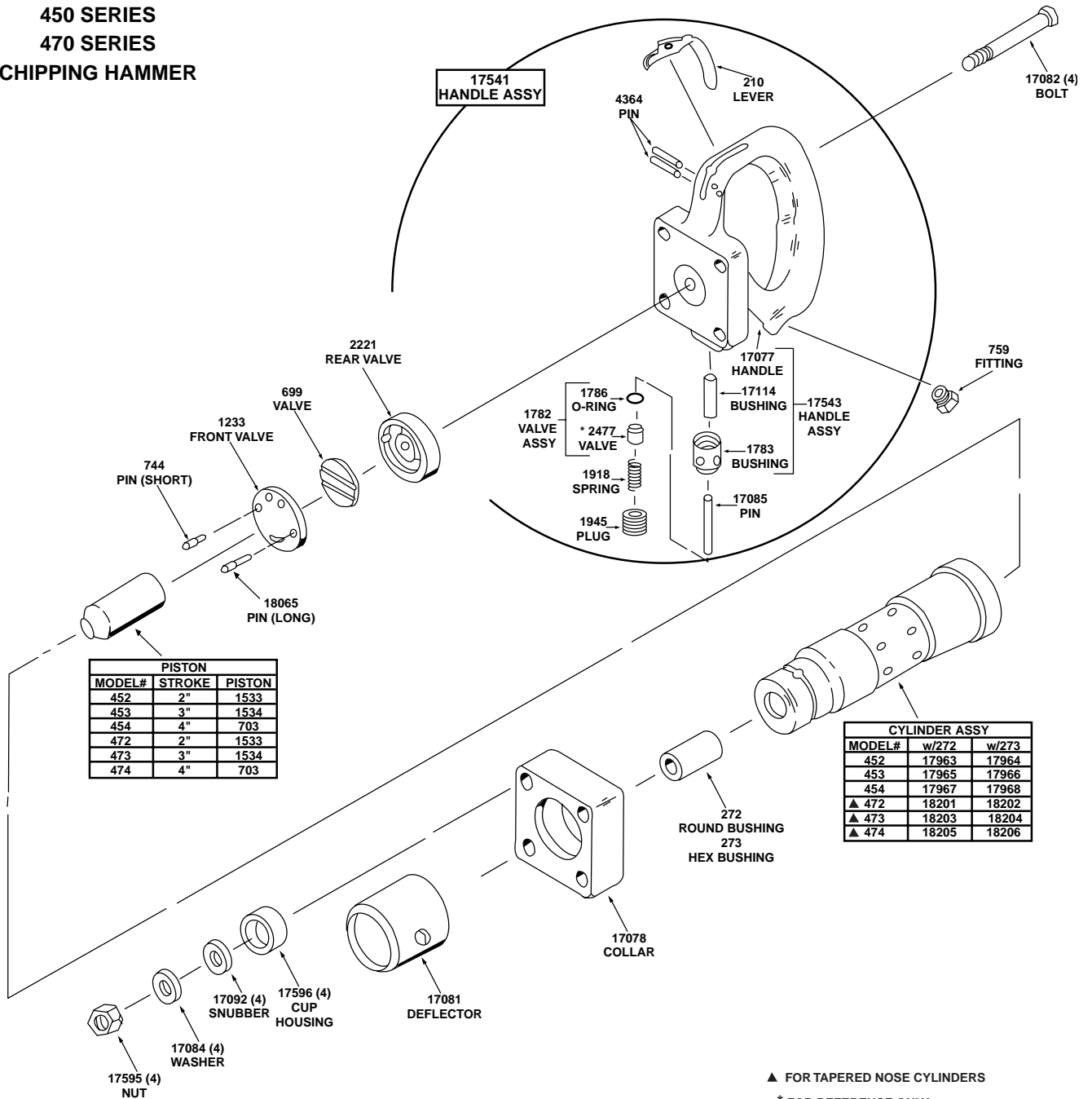
- 3383 latch-type retainer (no springs needed)
- 3026 quick-change retainer
- 5550 ball-type retainer
- 6144 round collar retainer
- 3388 7/8"-24 to 1/2" hose barb swivel
- 2698 7/8"-24 to 3/8" NPT swivel
- 9109 10 ft., 1/2" dia. whip hose with universal coupler and 7/8"-24 to 1/2" hose barb swivel

SPECIFICATIONS

Part Number	Chuck Bushing	Bore	Stroke	BPM	CFM @ 90 PSI inlet pressure	Weight lbs. without retainer	Length inches without retainer	Air Inlet NPT
450 SERIES STRAIGHT-NOSE CHIPPING HAMMERS								
17728	.680 round or	1-1/8	2	2100	32-34	17	12-3/4	7/8-24 STD
17729	.580 hex	1-1/8	2	2100	32-34	17	12-3/4	7/8-24 STD
17259	.680 round or	1-1/8	3	1650	33-35	18	14-9/16	7/8-24 STD
17080	.580 hex	1-1/8	3	1650	33-35	18	14-9/16	7/8-24 STD
17731	.680 round or	1-1/8	4	1375	34-36	19	15-9/16	7/8-24 STD
17732	.580 hex	1-1/8	4	1375	34-36	19	15-9/16	7/8-24 STD
470 SERIES TAPERED-NOSE CHIPPING HAMMERS								
18216	.680 round or	1-1/8	2	2100	32-34	17	13-1/4	7/8-24 STD
18217	.580 hex	1-1/8	2	2100	32-34	17	13-1/4	7/8-24 STD
18218	.680 round or	1-1/8	3	1650	33-35	18	15-1/4	7/8-24 STD
18219	.580 hex	1-1/8	3	1650	33-35	18	15-1/4	7/8-24 STD
18220	.680 round or	1-1/8	4	1375	34-36	19	16	7/8-24 STD

AMERICAN PNEUMATIC TOOL

APT MODEL
450 SERIES
470 SERIES
CHIPPING HAMMER



▲ FOR TAPERED NOSE CYLINDERS

* FOR REFERENCE ONLY
 (THESE PARTS NOT SOLD SEPARATELY)

CHIPPING HAMMERS

650 SERIES



APT Chipping Hammers are used for scaling, chiseling, removing concrete build-up from the inside of cement mixers, light concrete demolition and cement finishing, form stripping, etc.

FEATURES

- Flapper valve design allows dirt to pass without stopping the tool
- Deep case-hardened alloy steel cylinders
- Drop-forged handles
- Replaceable bushing
- Adjustable exhaust deflector
- Choice of optional retainers including the APT latch-type
- Price includes oval retainer and locking spring

MODEL 650 SERIES FEATURES:

- Traditional pistol grip handle
- Available in 2", 3", and 4" strokes

ORDERING INFORMATION:

Standard Accessories:

- 7022 oval collar retainer
- 1941 retainer spring
- 759 reducing bushing 7/8"-24 to 3/8" NPT female

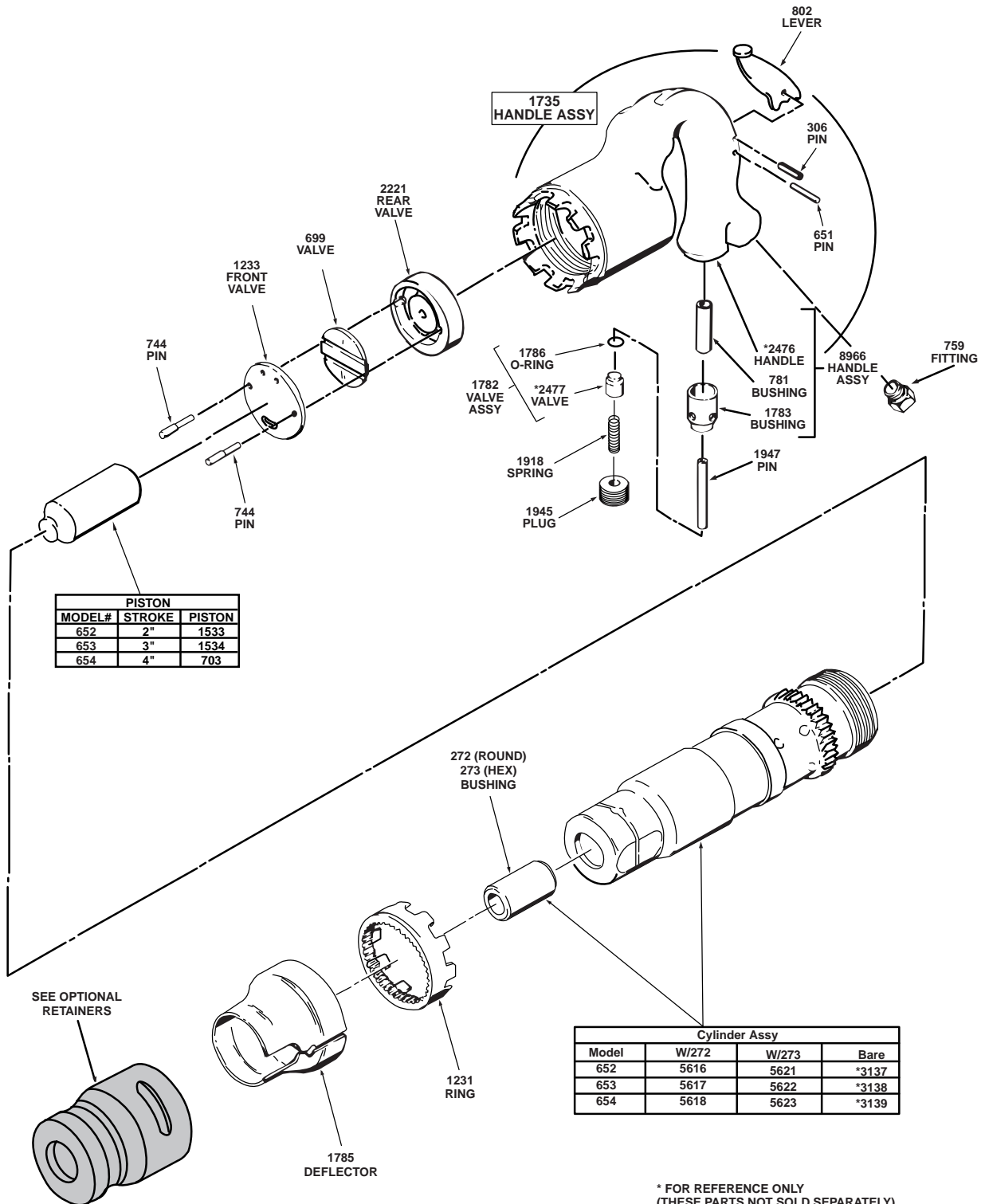
Optional accessories at extra charge:

- 3383 latch-type retainer (no springs needed)
- 3026 quick-change retainer
- 5550 ball-type retainer
- 6144 round collar retainer
- 3388 7/8"-24 to 1/2" hose barb swivel
- 2698 7/8"-24 to 3/8" NPT swivel
- 9109 10 ft., 1/2" dia. whip hose with universal coupler and 7/8"-24 to 1/2" hose barb swivel

SPECIFICATIONS

Part Number	Chuck Bushing	Bore	Stroke	BPM	CFM @ 90 PSI inlet pressure	Weight lbs. without retainer	Length inches without retainer	Air Inlet NPT
5298	.680 round or	1-1/8	2	2100	32-34	12	13-1/4	7/8-24 STD
5299	.580 hex	1-1/8	2	2100	32-34	12	13-1/4	7/8-24 STD
5300	.680 round or	1-1/8	3	1650	33-35	14	15-1/4	7/8-24 STD
5301	.580 hex	1-1/8	3	1650	33-35	14	15-1/4	7/8-24 STD
5302	.680 round or	1-1/8	4	1375	34-36	16	16	7/8-24 STD
5303	.580 hex	1-1/8	4	1375	34-36	16	16	7/8-24 STD

APT MODEL 650 SERIES CHIPPING HAMMER



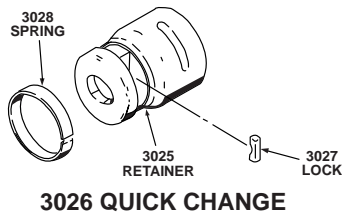
PISTON		
MODEL#	STROKE	PISTON
652	2"	1533
653	3"	1534
654	4"	703

Cylinder Assy			
Model	W/272	W/273	Bare
652	5616	5621	*3137
653	5617	5622	*3138
654	5618	5623	*3139

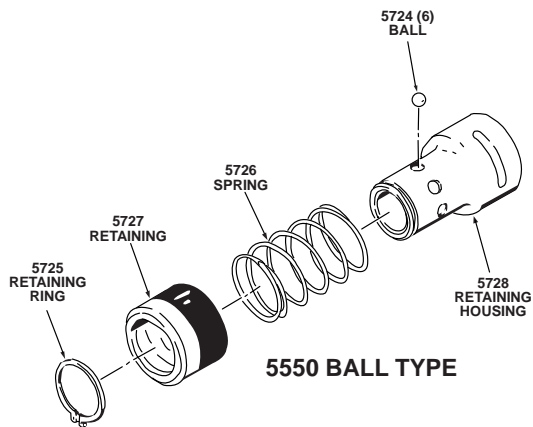
* FOR REFERENCE ONLY
(THESE PARTS NOT SOLD SEPARATELY)

AMERICAN PNEUMATIC TOOL

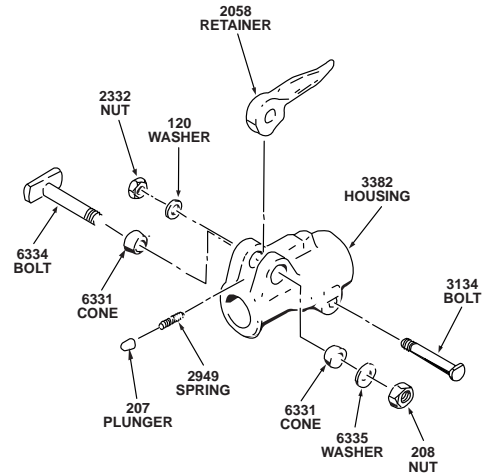
OPTIONAL RETAINERS (FOR APT STRAIGHT-NOSE CHIPPING HAMMERS)



3026 QUICK CHANGE



5550 BALL TYPE



**3383 LATCH-TYPE
IMPORTANT**

DO NOT USE 3383 Latch-type Retainer with .580 hex-shank chipping hammer steel. The latch does not properly catch the round collar, thereby allowing the steel to shoot out of the chipping hammer. This retainer (3383 Assy) should only be used with .680 round collar or round shank steel only.



7022 OVAL COLLAR

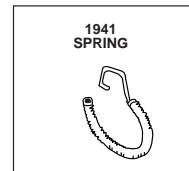


6144 ROUND COLLAR

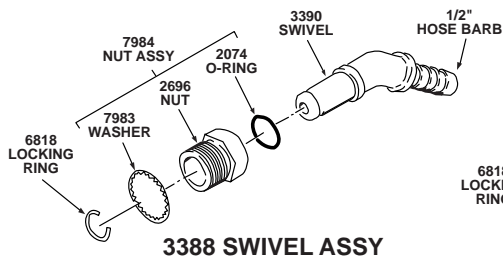
OPTIONAL RETAINER (FOR APT TAPERED-NOSE CHIPPING HAMMERS)



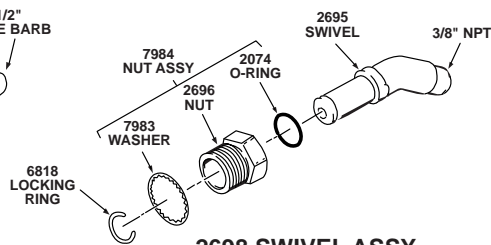
18210 OVAL COLLAR



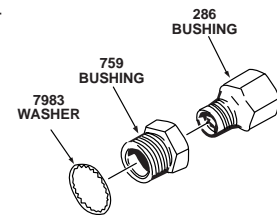
OPTIONAL FITTINGS



3388 SWIVEL ASSY



2698 SWIVEL ASSY



REDUCING BUSHING